

## Population Dynamics and Household Structure

Population	1990	2010
Total population (000)	8,673	15,370
Population density (per km <sup>2</sup> )	7	12
Total fertility rate	7.1	6.3
Child dependency ratio	96	93
Old-age dependency ratio	6	4
Proportion of youth (%)	20	20

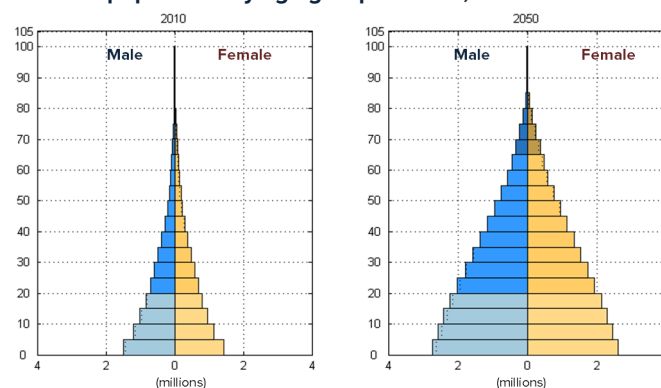
	1990-1995		2005-2010		
Annual population growth (%)	2.5		3.1		
Life expectancy	M	F	M	F	
		at birth	44	46	49
	at 60	12	13	13	14

Population projections (000)	Variant		
	Low	Medium	High
2030	25,621	<b>26,784</b>	27,951
2050	37,719	<b>42,130</b>	46,794
2100	55,710	<b>80,506</b>	112,982

Household structure	
One-person households (%)	5 (2006)
Female-headed households (%)	12 (2006)
Nuclear households (%)	70 (2006)
Orphans (000), due to all causes	690 (2009)

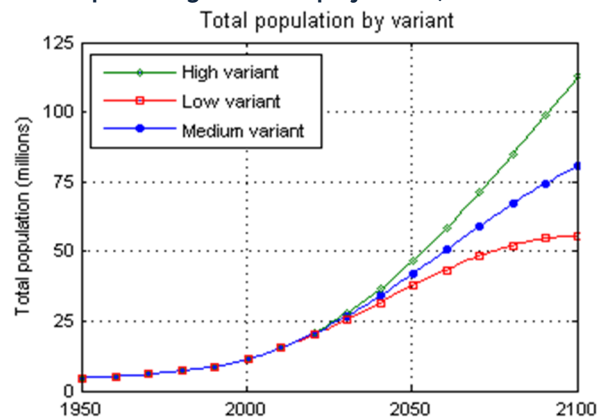
Government policies and concern		2009
Government policy on population growth		Lower
Government policy on level of fertility		Lower
Level of government concern about population ageing		Minor concern

Total population by age group and sex, 2010 and 2050



Source: Population pyramids are based on medium variant of the 2010 revision of the World Population Projections (WPP) by UN Population Division.

Population growth and projections, 1950 - 2100



Source: The projections are based on the 2010 revision of WPP by UN Population Division.

## Urbanization and Environment

	1990	2010
Urban population (%)	23	28
Urban population living in slums (%)	94	66
Using improved drinking water (%)	28	64
Using improved sanitation (%)	15	22
CO <sub>2</sub> emission (000 tons)	422	594 **
Air pollution: PM <sub>10</sub> (mg/m <sup>3</sup> )	259	112 **

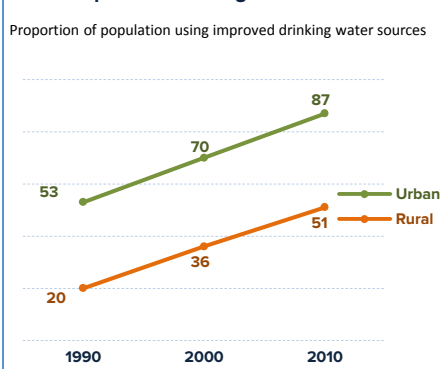
Government view and policy		2009
Government view on spatial distribution	Major change desired	
Government policy on migration from rural to urban areas		Lower

\*\* Data year 2008

\*\* Data year 2008

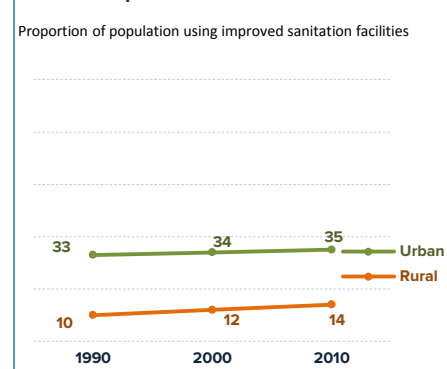
Note: "n.a." stands for "not available".

Improved drinking water sources



Source: UNICEF/WHO

Improved sanitation facilities



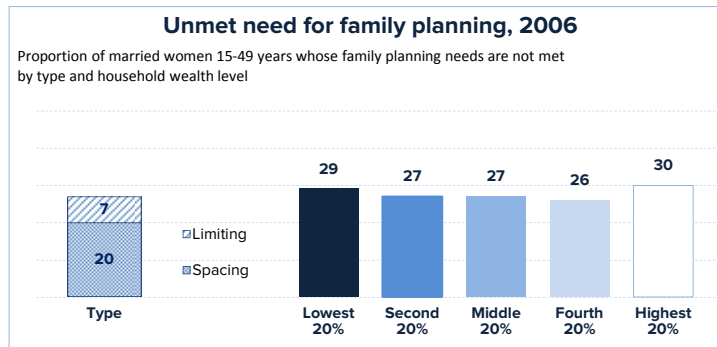
Source: UNICEF/WHO

## Sexual and Reproductive Health

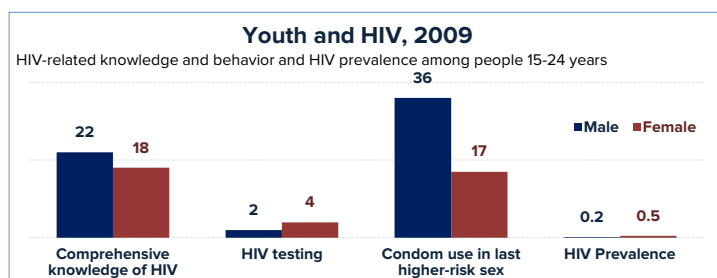
Unmet need for family planning (%)	28	(1996)	28	(2006)
Contraceptive prevalence (%)				
any method (including traditional)	7	(1996)	8	(2006)
modern method only	5	(1996)	6	(2006)
Adolescent birth rate	198	(1994)	190	(2004)

<b>Government concerns and support</b>		<b>2009</b>
Level of government concern about adolescent fertility		Major concern
Government has policies to reduce adolescent fertility		Yes
Type of government support for family planning		Direct support

HIV prevalence (%), 15-49	0.4	(1990)	1.0	(2009)
sex workers			35.3	(2009)
injecting drug users			n.a.	
men having sex with men			n.a.	
	All		Children	
Antiretroviral therapy (%)	46		n.a.	(2010)
Level of government concern about HIV/AIDS			Major concern	(2009)



Source: UNFPA

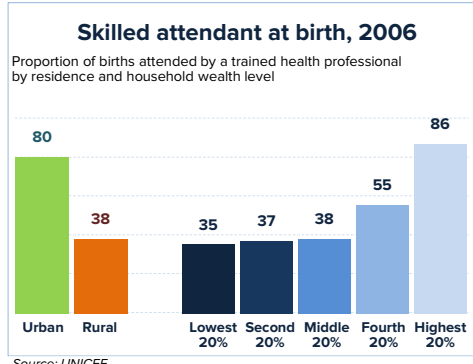


Source: UNAIDS

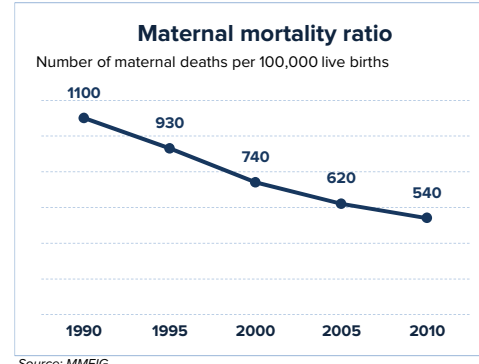
## Maternal and Child Health

Births attended by trained health professional (%)	40	(1996)	49	(2006)
Antenatal care (%)				
at least 1 visit	47	(1996)	70	(2006)
at least 4 visits	26	(1996)	35	(2006)
Births by C-section (%)	n.a.		2	(2006)
Abortion rate			n.a.	

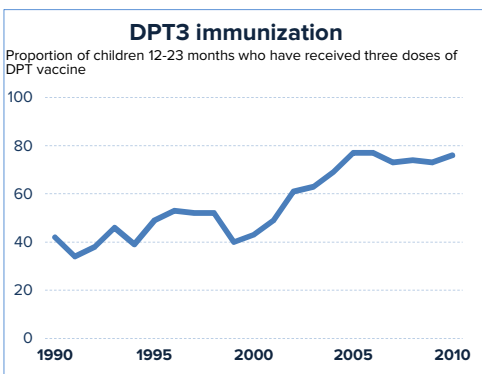
Legal grounds on which abortion is permitted	Rape or incest; To save women's life. (2009)
--	--



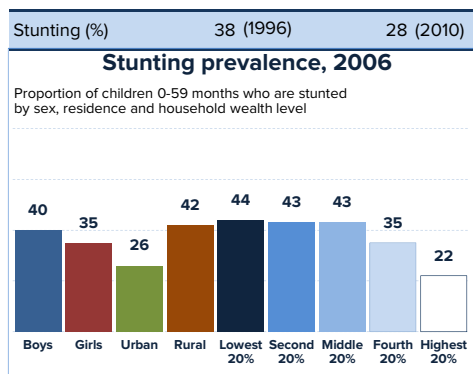
Source: UNICEF



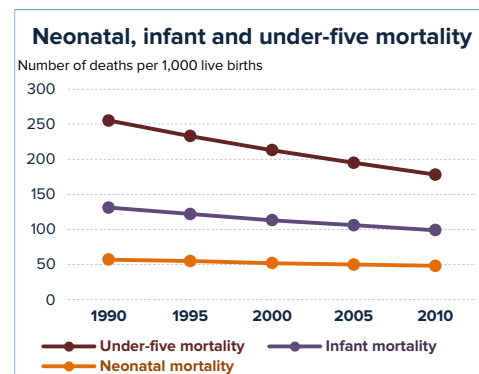
Source: MMEIG



Source: UNICEF/WHO



Source: UNICEF



Source: IGME

Number of doctors (per 100,000 population)	5	(2008)
--	---	--------

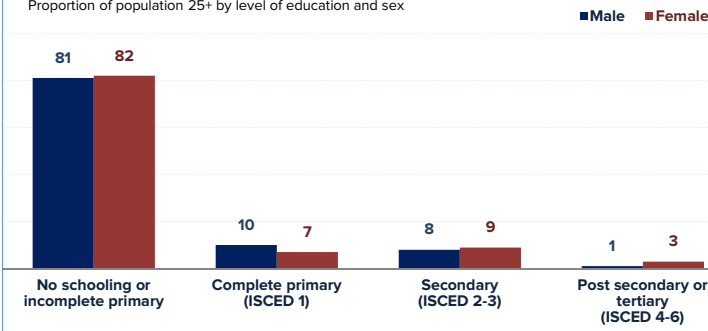
Number of nurses or midwives (per 100,000 population)	30	(2008)
---	----	--------

## Education

	Male	Female	Male	Female
Literacy rate (%)				
Population 15+	33	16 (2003)	43	20 (2010)
Population 15-24	n.a.	n.a.	56	34 (2010)
Population 65+	n.a.	n.a.	19	2 (2010)
Adjusted net enrollment rate (%), primary	49	36 (1999)	72	63 (2011)
Primary school completion rate (%)	36	23 (2000)	61	50 (2011)
Transition rate from primary to secondary education (%)	76	77 (1999)	87	85 (2009)
Public expenditure on education as % of GDP		3.0 (1999)		4.5 (2010)

### Educational attainment among population 25+, 2006

Proportion of population 25+ by level of education and sex



Source: UNESCO

ISCED: International Standard Classification of Education

## Gender Equality and Empowerment of Women

Seats in parliament held by women (%)	2 (1997)	10 (2011)
Share of women in non-agricultural employment (%)	27 (1997)	35 (2004)
Women making decision on own health (%)	n.a.	18 (2006)
Women exposed to intimate partner violence (%)	n.a.	n.a.
Women 20-24 married by 18 (%)	70 (1995)	55 (2010)

### Legal age at marriage (2011)

	Without parental consent		With parental consent	
Male	21	Female 18	Male 18	Female 16

### Child marriage

Proportion of females 20-24 years who were married by age 18 by residence and household wealth level

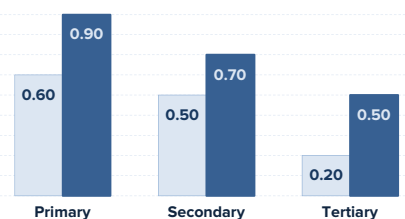
No data

Urban Rural Lowest 20% Second 20% Middle 20% Fourth 20% Highest 20%

Source: UNICEF

### Gender parity index

Ratio of number of female students enrolled to male students



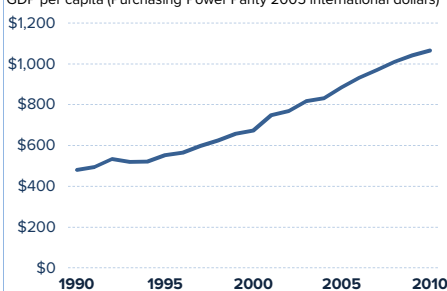
Source: UNESCO

## Poverty and Economic Development

Population living below \$1.25 per day (%)	86 (1994)	50 (2010)
Share of poorest quintile in national consumption (%)	5 (1994)	7 (2006)
Own account and family workers in employment (%)	n.a.	87 (2006)
Labor force participation (%)	51 (1990)	53 (2010)
Unemployment rate (%)		
15+	n.a.	9 (2004)
15-24	n.a.	n.a.

### GDP per capita

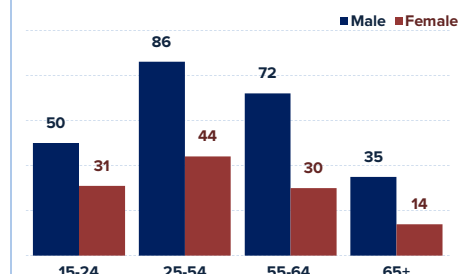
GDP per capita (Purchasing Power Parity 2005 international dollars)



Source: World Bank

### Labor force participation, 2010

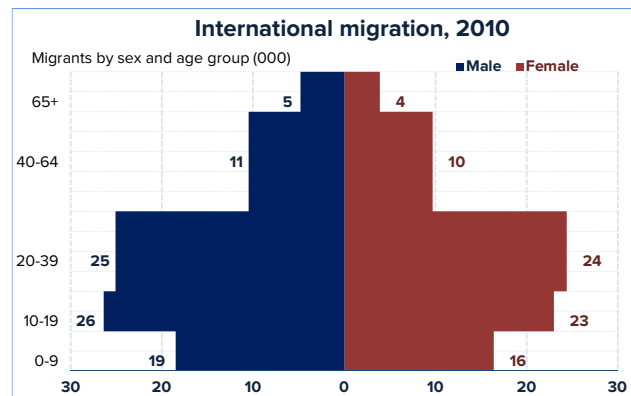
Ratio of labor force to working-age population by age group and sex



Source: ILO

## Migration

	1990	2010
International migrants (000)	165	163
% female among migrants 0-19	47	47
% female among migrants 20-64	51	49
% female among migrants 65+	40	45
Number of refugees	13,411	13,558
Number of internally displaced persons	n.a.	At least 93433 (2011)
Annual inflow of remittances (\$000)	107	457 (2011)
Government policy on immigration		No intervention (2009)
Government policy on emigration		Lower (2009)



Source: UN Population Division

## Glossary and Data Sources

### Population Dynamics and Household Structure

**Total fertility rate** – The mean number of children a woman would have by age 50 if she survived to age 50 and were subject to the age-specific fertility rates observed in a given year. Source: UN Population Division

**Child dependency ratio** – The ratio of the population aged 0-14 to the population aged 15-64, percentized. Source: UN Population Division

**Old-age dependency ratio** – The ratio of the population aged 65 or older to the population aged 15-64, percentized. Source: UN Population Division

**Life expectancy (at birth)** – The number of years to be lived by a newborn, based on current age-specific mortality rates. Source: UN Population Division

**Life expectancy (at 60)** – The additional number of years to be lived by a person who has survived to age 60, based on current age-specific mortality rates. Source: UN Population Division

**Population projections** – Estimated population based on the low, medium and high variants of deterministic projections from the 2010 revision of the World Population Prospects. Source: UN Population Division

**One-person households (%)** – Proportion of households that have only one household member. Source: ICFI/UN Statistics Division

**Female-headed households (%)** – Proportion of households where the household head is female. Source: ICFI/UN Statistics Division

**Nuclear households (%)** – Proportion of households where the only members are head, spouses and child(ren). Source: ICFI/UN Statistics Division

### Urbanization and Environment

**Urban population living in slums (%)** – Proportion of urban population living in slum households, defined as a group of individuals living under the same roof lacking one or more of the following conditions: access to improved water; access to improved sanitation; sufficient-living area; durability of housing. Source: UNHABITAT

**Using improved drinking water (%)** – Proportion of population who use any of the following types of water supply for drinking: piped water into dwelling, plot or yard; public tap/standpipe; borehole/tube well; protected dug well; protected spring; rainwater collection and bottled water (if a secondary available source is also improved). Source: UNICEF/WHO

**Using improved sanitation facilities (%)** – Proportion of population with access to facilities that hygienically separate human excreta from human contact, including flush/pour flush toilets or latrines connected to a sewer, - septic tank, or -pit, ventilated improved pit latrines, pit latrines with a slab or platform of any material which covers the pit entirely, except for the drop hole and composting toilets/latrines. Source: UNICEF/WHO

**CO<sub>2</sub> emission (tons)** – The total amount of carbon dioxide (in tons) emitted by the country as a consequence of all relevant human (production and consumption) activities. Source: UNFCCC

**Air pollution: PM<sub>10</sub> (mg/m<sup>3</sup>)** – The estimated average annual exposure of an urban resident to outdoor particulate matter smaller than 10 microns (PM<sub>10</sub>) in micrograms per cubic meter. Data for countries are urban-population weighted PM<sub>10</sub> levels in residential areas of cities with more than 100,000 residents. Source: UNEP

### Sexual and Reproductive Health

**Unmet need for family planning (%)** – Proportion of women married or in-union aged 15-49 who are fecund and sexually active and report not wanting any more children or wanting to delay the next child, but are not using any method of contraception. Source: UNFPA

**Contraceptive prevalence (%)** – Proportion of women married or in-union aged 15-49 who are currently using, or whose sexual partner is using, at least one method of contraception. Modern methods include female and male sterilization, oral hormonal pills, intra-uterine device (IUD), male condom, injectables, implant (including Norplant), vaginal barrier methods, female condom and emergency contraception. Traditional methods include the rhythm (periodic abstinence), withdrawal, lactational amenorrhea method (LAM) and folk methods. Source: UNFPA

Source of all government policy variables is UN Population Division.

### Sexual and Reproductive Health (continued)

**Adolescent birth rate** – Annual number of births to women aged 15-19 years per 1,000 women in that age group. Source: UNFPA

**Antiretroviral therapy (%)** – Proportion of people with advanced HIV infection receiving antiretroviral therapy according to nationally approved protocols (or WHO/UNAIDS standards). Source: UNAIDS

**Comprehensive knowledge of HIV (%)** – Proportion of people 15-24 years who correctly identified the two major ways of preventing the sexual transmission of HIV, who rejected the two most common local misconceptions about HIV transmission and who knew that a healthy-looking person can transmit HIV. Source: UNAIDS

**HIV testing (%)** – Proportion of people 15-24 years who received HIV testing and counselling in the past 12 months and know their results. Source: UNAIDS

**Condom use during last higher-risk sex (%)** – Proportion of people 15-24 years who reported using condom during last sexual intercourse with a non-cohabiting, non-marital sexual partner in the last 12 months. Source: UNAIDS

### Maternal and Child Health

**Births attended by trained health professional (%)** – Proportion of deliveries attended by trained health personnel. Traditional birth attendants (TBAs), even if they receive a short training course, are not included. Source: UNICEF

**Antenatal care (%)** – Proportion of women aged 15-49 with a live birth during a time period that received antenatal care provided by a skilled health professional (doctor, nurse, or midwife) at least once during pregnancy. Both trained and untrained TBAs are excluded. Source: UNICEF

**Abortions rate** – Number of legally induced abortions per 1,000 women aged 15-44 years. Induced abortions are those initiated by deliberate action taken with the intention of terminating pregnancy; all other abortions are considered spontaneous. Source: UN Population Division

**Maternal mortality ratio** – The ratio of the number of maternal deaths during a given time period per 100,000 live births during the same time-period. A maternal death refers to a female death from any cause related to or aggravated by pregnancy or its management (excluding accidental or incidental causes) during pregnancy and childbirth or within 42 days of termination of pregnancy, irrespective of the duration and site of the pregnancy. Source: MMEIG

**DPT3 immunization** – Proportion of children 12-23 months who have received three doses of the combined diphtheria, tetanus toxoid and pertussis vaccine in a given year. Source: UNICEF/WHO

**Stunting prevalence (%)** – Proportion of children aged 0-59 months whose height for age are less than two standard deviations below the median height for age of the international reference population. Source: UNICEF

**Under-five mortality** – The probability (expressed as a rate per 1,000 live births) of a child born in a specified year dying before reaching the age of five if subject to current age-specific mortality rates. Source: IGME

**Infant mortality** – The probability (expressed as a rate per 1,000 live births) of a child born in a specified year dying before reaching the age of one if subject to current age-specific mortality rates. Source: IGME

**Neonatal mortality** – The probability (expressed as a rate per 1,000 live births) of dying during the first month of life. Source: IGME

### Education

**Adjusted net enrollment rate (%)**, primary – The number of children of official primary school age who are enrolled in primary education as a percentage of the total children of the official school age population. This also includes children of primary school age enrolled in secondary education. Source: UNESCO

**Primary school completion rate (%)** – Total number of new entrants in the last grade of primary education, regardless of age, expressed as percentage of the total population of the theoretical entrance age to the last grade of primary. Source: UNESCO

### Education (continued)

**Education attainment among population 25+ years** – Percentage distribution of population aged 25 years and above according to the highest level of education attained or completed. Source: UNESCO

**Transition rate from primary to secondary education (%)** – The number of pupils (or students) admitted to the first grade of secondary education in a given year, expressed as a percentage of the number of pupils (or students) enrolled in the final grade of primary education in the previous year. Source: UNESCO

### Gender Equality and Empowerment of Women

**Share of women in non-agriculture employment (%)** – Proportion of female workers in wage employment in the non-agricultural sector. Source: ILO

**Women making decision on own health (%)** – Proportion of women currently married or in union aged 15-49 years who usually make a decision about own health care by themselves or jointly with spouse. Source: UNFPA

**Women exposed to intimate partner violence (%)** – Proportion of women currently married or in union aged 15-49 years who experienced physical violence from an intimate partner in the past 12 months. Source: UNAIDS

**Women 20-24 years married by 18 (%)** – Proportion of women aged 20-24 years who were first married or in union before they were 18 years old. Source: UNICEF

**Gender parity index** – Ratio of the number of female students enrolled at primary, secondary and tertiary levels of education to the number of male students in each level. Source: UNESCO

### Poverty and Economic Development

**Labor force participation (%)** – Proportion of working-age population that is in the labor force (including persons employed and persons unemployed). Source: ILO

**Own account and family workers in employment (%)** – The sum of contributing family workers and own-account workers as a percentage of total employment. Own-account workers hold the type of jobs defined as self-employment jobs, and have not engaged on a continuous basis any employees to work for them. Contributing family workers, also known as unpaid family workers, are those workers who are self-employed in a market-oriented establishment operated by a related person living in the same household. Source: ILO

### Migration

**International migrants** – The mid-year estimate of the number of people living in a country or area other than that in which they were born or other than that of their citizenship if place of birth is not available. Source: UN Population Division

**Number of refugees** – The number of people who, owing to a well-founded fear of being persecuted for reasons of race, religion, nationality, membership of a particular social group or political opinion, are outside the country of nationality, and are unable, or unwilling to avail themselves of the protection of that country. Source: UNHCR

**Number of internally displaced persons** – The number of people who were forced to flee their homes because their lives were at danger, but did not cross international borders. Source: IMDC

**Annual inflow of remittances (\$000)** – Migrant remittances are defined as the sum of workers' remittances, compensation of employees, and migrants' transfers. Workers' remittances are current private transfers from migrant workers who have lived in the host country for more than one year to recipients in the workers' country of origin. If the migrants have lived in the host country for less than one year, their entire income in the host country should be classified as compensation of employees. Migrants' transfers are the net worth of migrants' assets that are transferred from one country to another at the time of migration. Source: World Bank