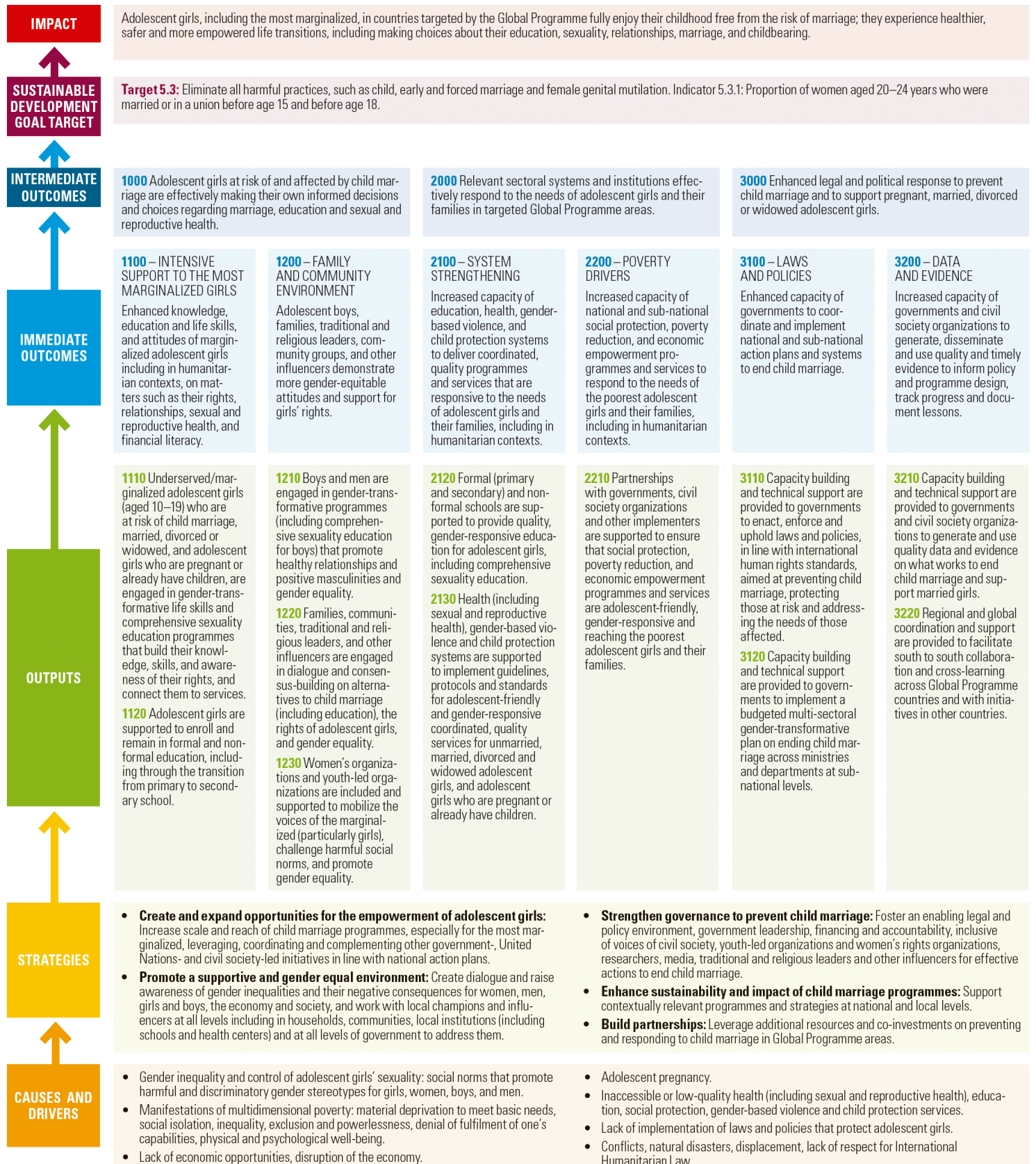


November 2019

# GLOBAL PROGRAMME PHASE II THEORY OF CHANGE 2020-2023



**PROBLEM:** Child marriage and early union (of adolescent girls and boys) persists as a common practice in many societies and is associated with a combination of structural, economic, socio-cultural factors and broader gender inequality. Lack of locally acceptable alternative life opportunities pushes adolescent girls and boys into marriage. A total of 650 million women and girls alive today were married as children.